

Figure 1: A deep field image showing a large number of galaxies, including many small, faint galaxies and several larger, brighter galaxies. The image is a composite of many individual observations, resulting in a high-resolution view of the universe.

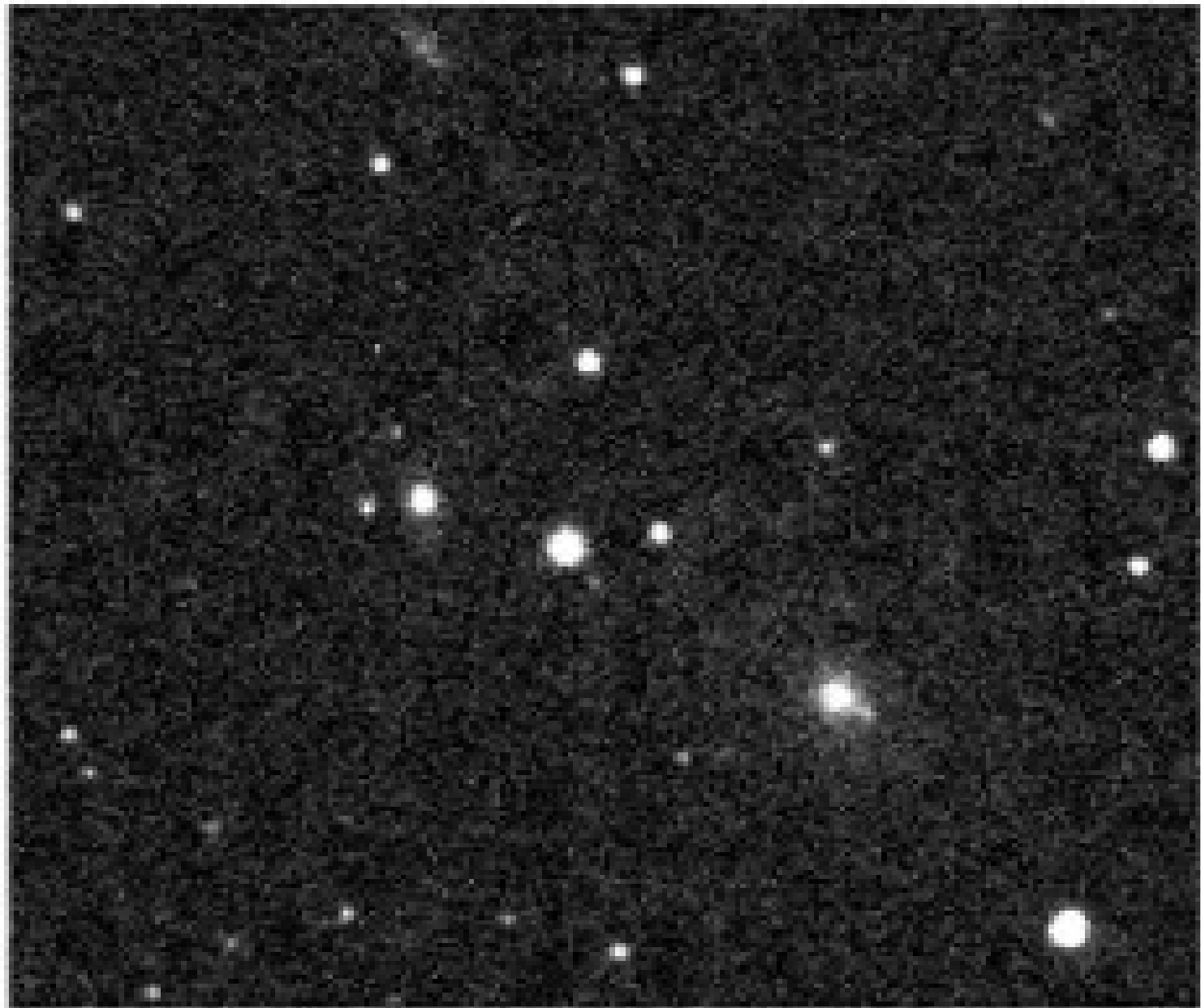


Figure 1: A black and white photograph of a star cluster or galaxy core, showing numerous bright, point-like stars of varying sizes and colors against a dark background.



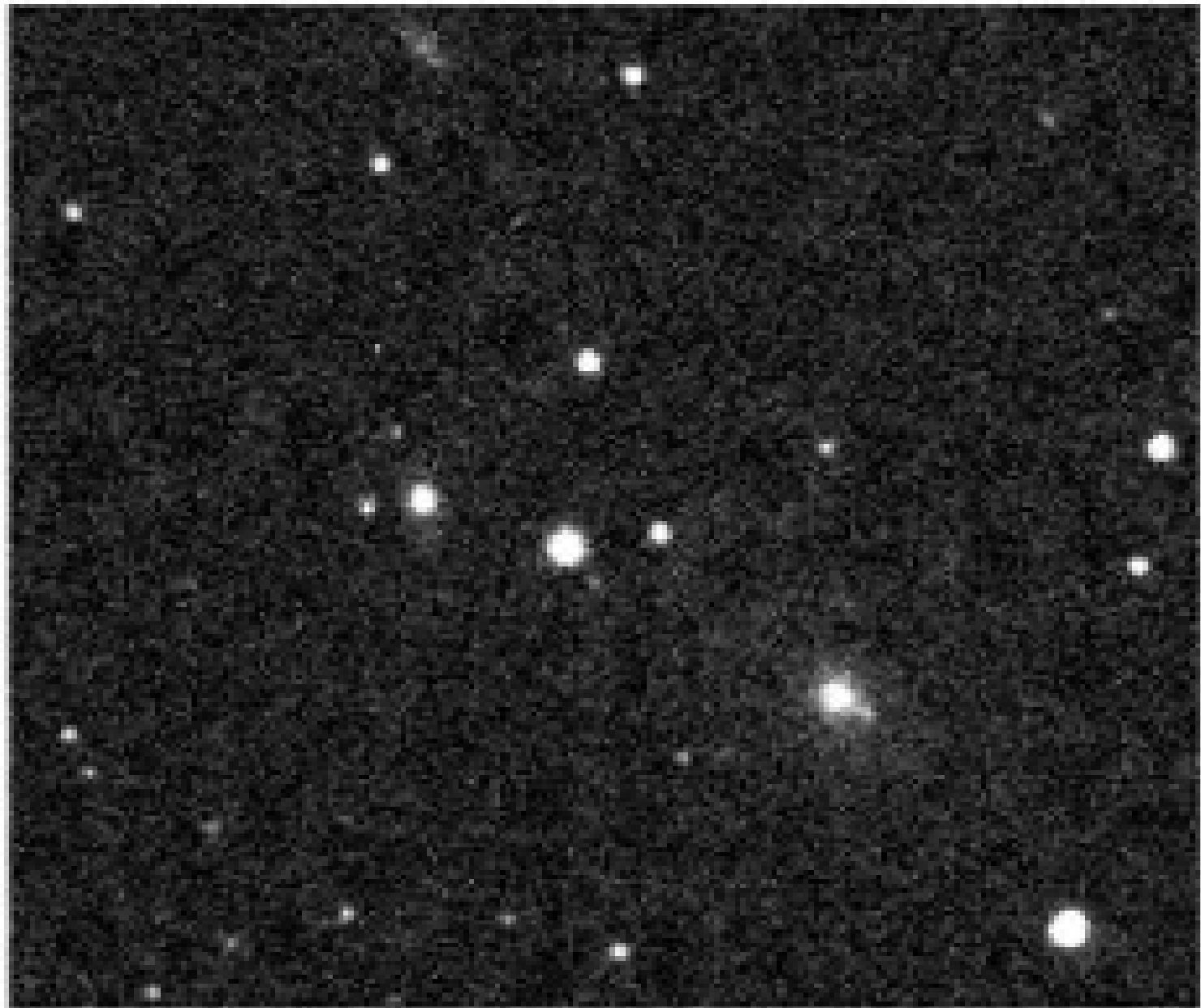


Figure 1: A black and white photograph of a star field, likely a galaxy core or a star cluster, showing numerous bright stars of varying sizes and colors against a dark background.





